

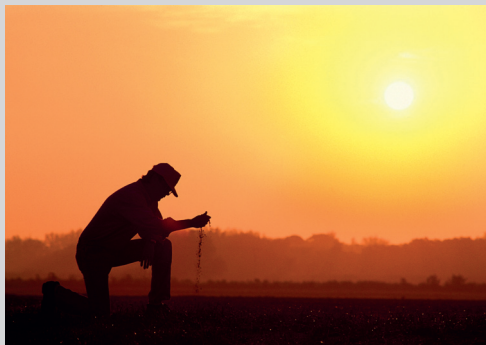
SPECIAL STORAGE

KEPLERWEBER®



MORE THAN 85 YEARS CONTRIBUTING TO OUR CUSTOMERS' GROWTH.

Founded in 1925, in the city of Panambi/Brazil, and focused on the agribusiness since its creation, Kepler Weber is specialized in developing complete storage solutions. Kepler Weber offers an agile and integrated structure, which allows us to annually process 100,000 Mt of steel to serve an array of customers like trading companies and cooperatives, or even small and big businesses. The company is widely recognized for the development of agribusiness in Brazil and, acting as an exporter since 1973, is the current Latin-American leader in the segment. Our strong investment in technology, the maximum quality of consumables and the development of tailor-made projects are features that confirm Kepler Weber's commitment of always contributing to its customer's growth.



SERVICES

KW Support

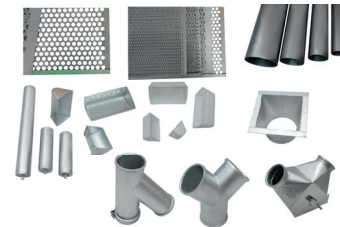
Our multiservice support system aims at fulfilling our customers' every after sale need in Brazil or abroad. In order to keep the highest quality and performance standards for Kepler Weber equipment, the KW Support offers services like Technical Assistance, Original Spare Parts and Technical Training.

Technical Assistance

A specialized technical team is at the complete service of Kepler Weber's customers for answering questions, running technical checks, and offering solutions. Technical visits are also offered in order to carry out preventive and corrective maintenance services and to provide overhauls, improvements, updates, and expansion of the customer's system.

Original Parts

Original parts for Kepler Weber equipment are available for purchase through KW Support or in any of our many resellers in Brazilian territory, or through our international sales agents.

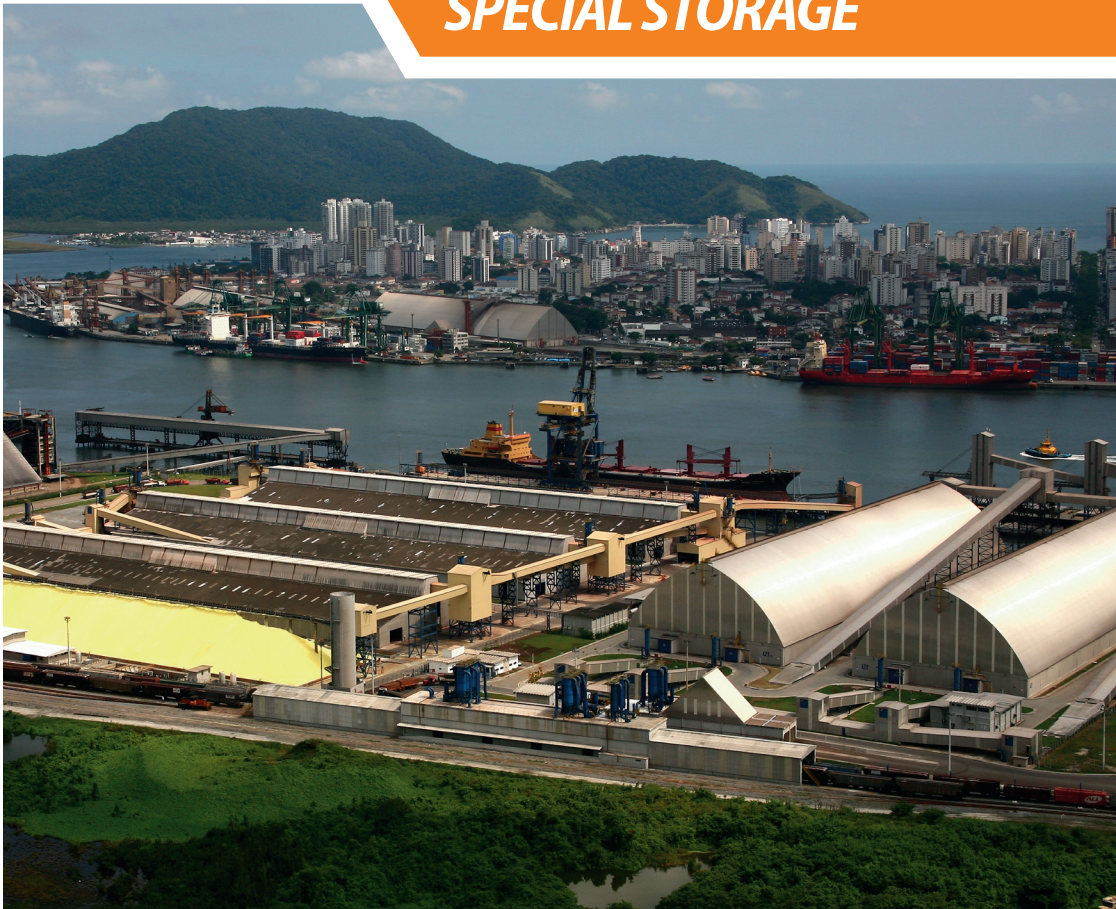


Technical Training

Our Technical Training Program takes Kepler Weber professionals with theoretical and practical expertise of grain transport, cleaning, drying and storage techniques, to the client's facilities, where they teach courses of equipment operation and maintenance.

Special equipment for multimodal transshipment stations, sea and river ports, fertilizer industries, sugar terminals, industries that process grains, bran, biomass and other activities that required high capacities for moving bulk solids. The quality of materials used in the horizontal and vertical conveyors made by Kepler Weber provides a long life span, with high product-moving capacity. They are built of sheet steel, finished in accordance with the requirements of each specific application.

SPECIAL STORAGE



Bucket Elevator

BUCKET ELEVATOR

MODEL	Capacity*	
	t/h	m ³ /h
TELB 6	250	330
TELB 7	400	530
TELB 8	500	660
TELB 9	750	1,000
TELB 10	1,000	1,330
TELB 11	1,250	1,660
TELB 12	1,500	2,000

*Nominal Capacity for Soybean.

Extremely strong, they operate continuously in the vertical movement of large volumes of bulk materials.

1,500 t/h Bucket Elevators.



Feed Elevators.



Detail of the elevator axis and buckets.



Kepler Weber technology in the design, manufacture and assembly of equipment and systems provides operating efficiency with an adequate energy consumption, less use of maintenance and environment conservation.

Belt Conveyors

BELT CONVEYORS

CT-30"	400	530
CT-36"	600	800
CT-42"	750	1,000
CT-48"	1,000	1,330
CT-54"	1,500	2,000
CT-60"	2,000	2,660
CT-72"	3,000	4,000

These bucket elevators are aimed to reach the requirements of different capacities and applications, according to the needs of each segment.

1,500 t/h (54") Belt Conveyor



Belt Conveyor for unloading warehouses (54")



Detail of a trestle



Belt Conveyors



Belt Conveyor for sulfur



1,500 t/h (54") Belt Conveyor

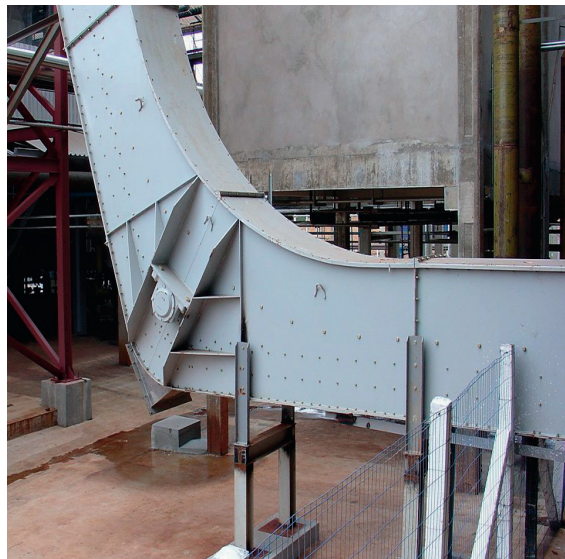
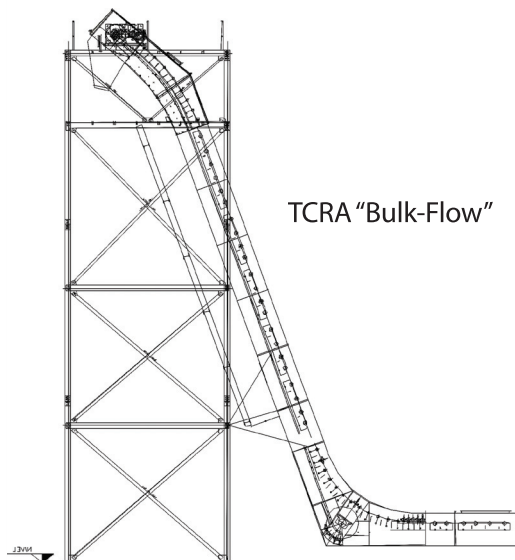
Chain Conveyors

A conveyor for specific applications, capable of having several loading and discharge points. The "Bulk-Flow" version, inclined, is specially indicated for industrial plants, where the layout demands configuration flexibility.

CHAIN CONVEYORS				
Model	Nominal Capacity			
	Normal		Bulk-Flow	
	t/h	m ³ /h	t/h	m ³ /h
TCRA-500	300	400	150	200
TCRA-600	400	530	200	260
TCRA-700	600	800	300	400
TCRA-800	750	1,000	400	530
TCRA-1000	1,000	1,330	500	660



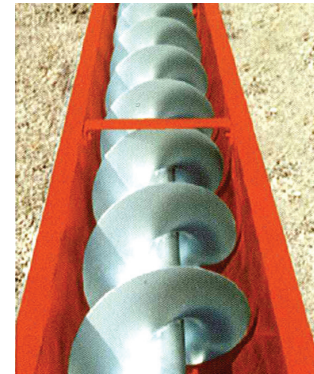
TCRA for unloading the hopper



Screw Conveyors

A practical and economical conveying system over short distances, that occupies a minimum of space, even high capacity operations.

SCREW CONVEYORS		
Model	Nominal Capacity	
	t/h	m ³ /h
TRUA-600	320	240
TRUA-750	400	300
TRUA-1.000	600	450



Interconnections, Gates and Fittings

The interconnection systems in bulk solid installations are provided with all the items requires for joining up machines and equipment, such as: ducts, curves, distribution boxes, gates, dampers and other fittings. Ducts and other spouting elements are joined by flanges and bolts, providing suitable sealing. Ducts are made of steel plates.



Interconnections, Gates and Fittings

When built with a square section they can be lined internally with steel wear plates, or high density polyethylene plates. Gates for unloading silos and granaries are of metal, slide valve type, actuated either manually by means of a rack-and-pinion, by pneumatic cylinders or motor drive, with the option of a combined manual system for flow regulating and a pneumatic on/of control.

Dust Collecting Systems

Developed to reduce dust in equipment and avoid explosion hazards, improving environment conditions.



Metal Structures

KW Metal Structures are built of milled ASTM A36 steel sections, bent or welded. Pursuant to ABNT standards, they are dimensioned to withstand the stresses caused by the conveyor and other equipment, people and loads. Parts are supplied with the finishing required by the specifications of each application.



Metal structure with special painting for sulfur



Metal structure for the flow scale

Malt Storage

Since 1976, Kepler Weber has been elaborating projects, manufacturing equipments and overseen the assembly of complete feed, processing and storage units for barley and malt.

State of the art technology in mechanical, electrical and automation projects, as well as high quality standards for the equipment installed, justify the company's current presence in malthouses throughout the South American market.

Operation and maintenance personnel training, as well as permanent supplementary advisory services are also part of what makes Kepler Weber a leader in its segment.



Special Storage

- *Port Installations*
- *Multimodal Transshipment Installations*
- *Fertilizer Conveyors*
- *Storage and movement of biomass*
- *Sugar Terminals*
- *Grain Processing Industries*
- *Malthouses*
- *Breweries*



www.kepler.com.br
comex@kepler.com.br
+55 51 3361 9615